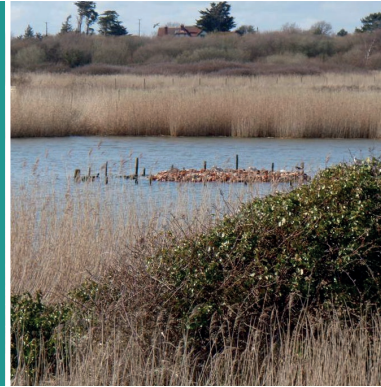


THE SOLENT FORUM

WORKING IN PARTNERSHIP FOR THE FUTURE

The Solent separates the Isle of Wight from mainland England and is a sheltered area of coastal water with a complex tidal pattern. Several large rivers, including the Test and Itchen, drain into it; it is a dynamic and diverse area of great importance to the economy, the environment and society.

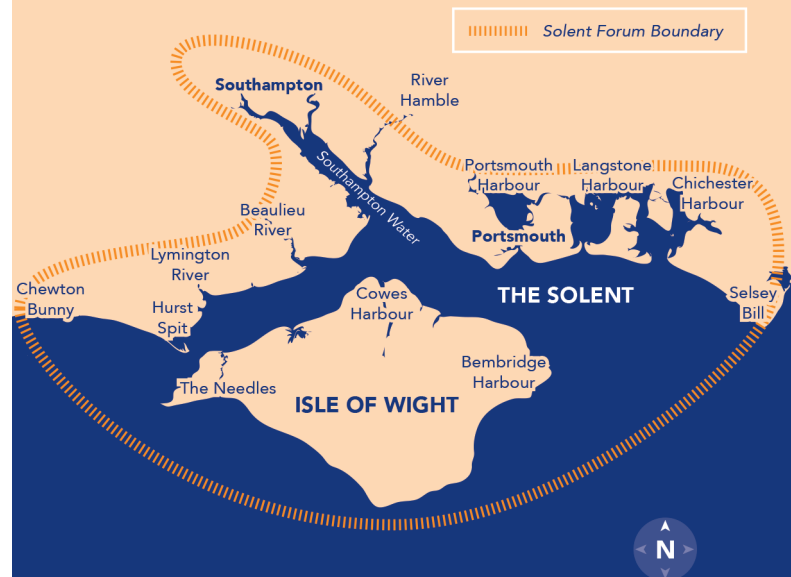


The Solent Forum is an independent coastal partnership, established in 1992 to develop a greater understanding among the many local and harbour authorities, user groups, marine businesses and agencies involved in planning and management of the Solent. It assists and advises them in carrying out their functions. The Forum now has over 50 members representing a wide range of sectors.



“
The Solent Forum facilitates integrated planning and management in the Solent
”

SOLENT FORUM BOUNDARY



THE SOLENT FORUM

YOUR INTERESTS

The Solent's tidal pattern and sheltered nature benefits major ports and shipping and provides an important recreational area for water sports, particularly yachting. Much of the coastline is densely populated and as it is low lying it is at risk from coastal change.

The area is of great ecological and landscape importance. Much of its coastal and marine area is internationally designated for nature conservation value, and it is bordered by and forms a part of the character of a number of nationally important protected landscapes including the New Forest National Park, and Areas of Outstanding Natural Beauty at Chichester Harbour and the Isle of Wight.

MARITIME HERITAGE AND ARCHAEOLOGY SITES

INDUSTRY

CATCHMENT FOR MAJOR RIVERS

FISHERIES AND SHELLFISHERIES

MILES OF FLOOD DEFENCE

LANDSCAPE AND SEASCAPE

MAJOR CITIES AND TOWNS

INTERNATIONALLY IMPORTANT HABITATS AND WILDLIFE

PORTS AND SHIPPING

AGRICULTURE

RECREATIONAL USERS OF WATER AND COAST

MINISTRY OF DEFENCE

POLLUTION CONTROL

BATHING BEACHES

AGGREGATES AND AGGREGATE WHARFS

WASTE MANAGEMENT



THE SOLENT FORUM

OUR SERVICES AND PROJECTS



PUBLICITY AND INFORMATION

- Solent News and monthly email news
- Solent Forum website
- State of the Solent indicators
- Marine Consents Guide
- Solent Information Database

WORKING WITH OTHERS

- Solent Forum members meetings
- Conferences and events
- Professor Mike Clark Bursary Awards
- Annual student placement
- Improving knowledge and transfer

SOLENT EUROPEAN MARINE SITES (SEMS) MANAGEMENT

- Secretariat to the SEMS Management Scheme
- Natural Environment Group to further evidence base and investigate issues

CONSULTANCY SERVICES AND PROJECT MANAGEMENT

- Solent Water Quality Awards
- Skills to run a range of projects
- Stimulating new opportunities for collaborative projects

“ The Solent Forum is a broadly based consultative forum providing a balanced neutral perspective for the Solent ”

THE SOLENT FORUM MEETING YOUR NEEDS

The Solent Forum provides support to member organisations who have responsibilities for, or who operate within, the Solent.

The Forum offers a unique neutral platform linking people and organisations for the future management of the area.

“
The Solent Forum provides a network for closer working relationships on coastal issues
”



GOVERNMENT

- Collaborating over strategic planning and management
- Facilitating policy and strategy formulation
- Obtaining primary and secondary evidence
- Sharing information and data
- Assisting with community consultation, participation and awareness
- Enabling debate and consensus building

INDUSTRY

- Helping to meet corporate responsibility targets
- Advising on environmental issues
- Raising community awareness and understanding
- Enhancing opportunities for collaboration with government agencies and universities

LOCAL AUTHORITIES & HARBOUR AUTHORITIES

- Providing a platform to assist in carrying out statutory functions
- Strategic guidance on sectoral management
- Greater understanding of cumulative effects
- Links with marine and land planning

USER GROUPS AND NGO'S

- Delivering an open platform for debate and discussion
- Providing information on coastal news, events and consultations
- Offering opportunities to work in partnership with others and secure joint funding and support
- Raising the profile of Solent Forum members

**Contact the
Solent Forum:**

The Solent Forum, c/o Hampshire County Council, Economy, Transport and Environment Department, EII Court West 1st Floor, The Castle, Winchester SO23 8UD
Tel: 01962 846027 Email: info@solentforum.org Twitter: [@Solent_Forum](https://twitter.com/Solent_Forum)