

Competitive Angling as a Scientific Tool

Dr Christina Hunt, Professor Gordon Watson, Dr Ian Hendy,
Dr Obinna Umeh, Georgina Banfield

christina.hunt@port.ac.uk



Lead partner:



Project partners:



Funded by:



Sea Angling Classic



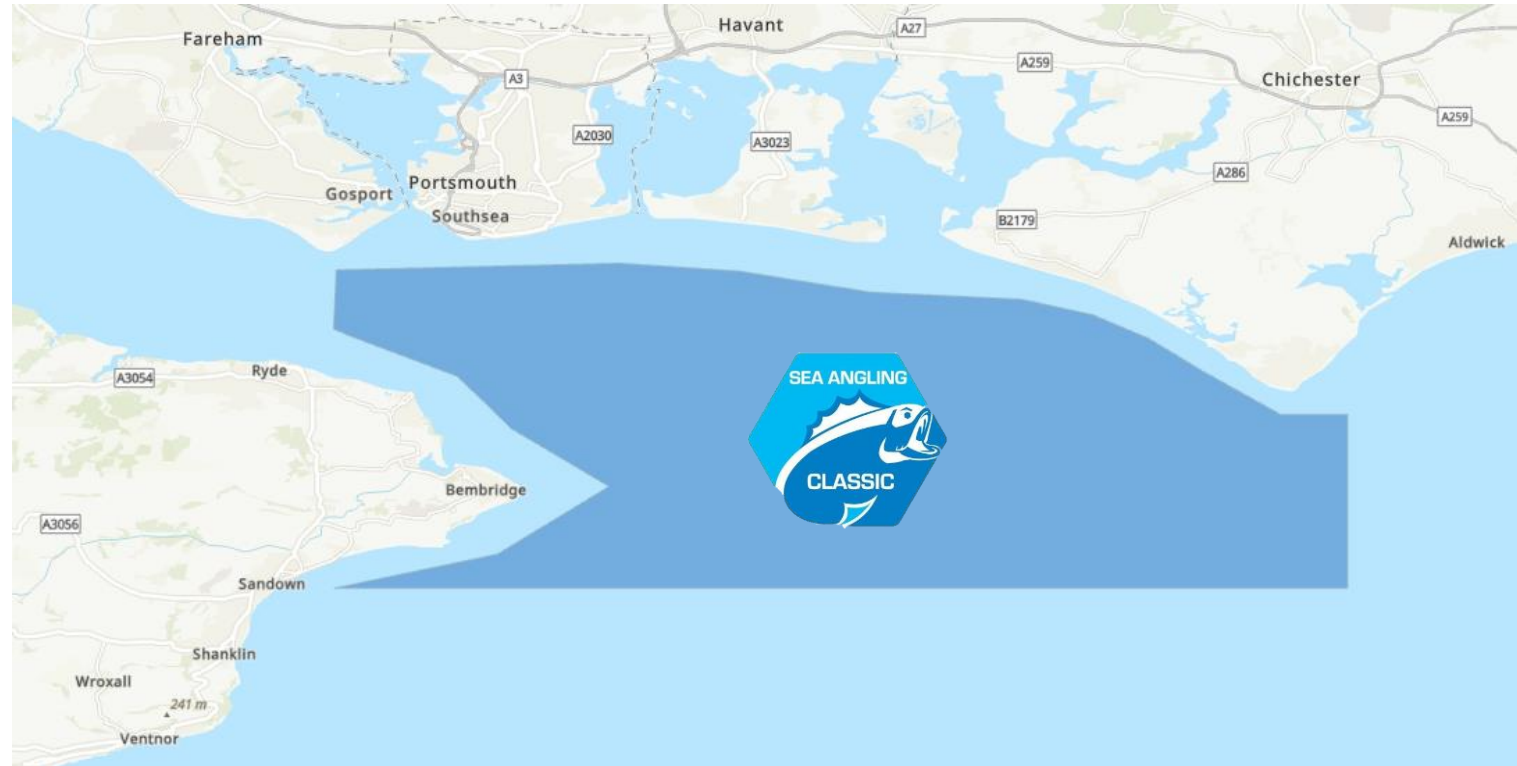
European seabass

Black bream

Skates/rays

Smoothhound

Tope



Project outputs



Enhanced species data

Shark and ray identification

Catch per unit effort

Habitat use

Machine learning model

