



ABP Southampton Whale Refurbishment and Relocation

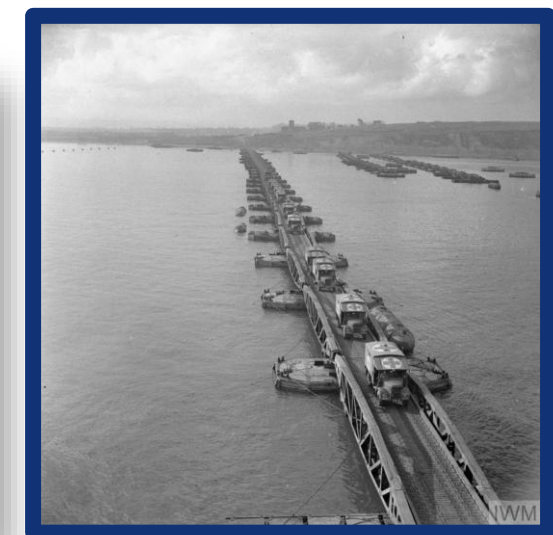
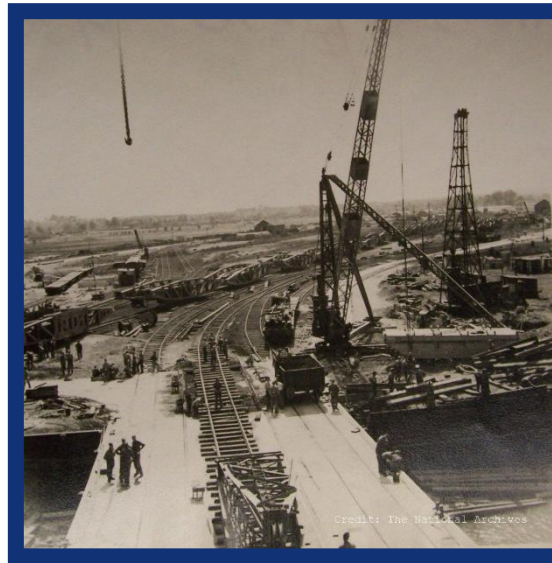
Megan Mardle

Sustainability and Consents Coordinator

11.03.2026

History of Mulberry Harbours and Marchwood Port

- Mulberry Harbours were vital to the success of the D-Day landings on 6 June 1944.
- D-Day, codenamed Operation Overlord, was one of the most significant operations of World War II, defining the start of the final phase of the war in Europe.
- Marchwood Port played a pivotal role in the inception of 'Operation Overlord' and served as the original construction site of the 'Whale' bridges.
- The Whale bridges, designed by Major Allan Beckett MBE, were floating roadways constructed to provide a rapid means of offloading troops, vehicles, and supplies onto the beaches of Normandy, bypassing the need for a traditional deep-water port.



The Relocation of the Whale Linkspan



The Relocation of the Whale Linkspan

