



# The Green Blue

Making the environment second nature



# What is The Green Blue?



A joint RYA & BMF initiative launched September 2005

We focus on:

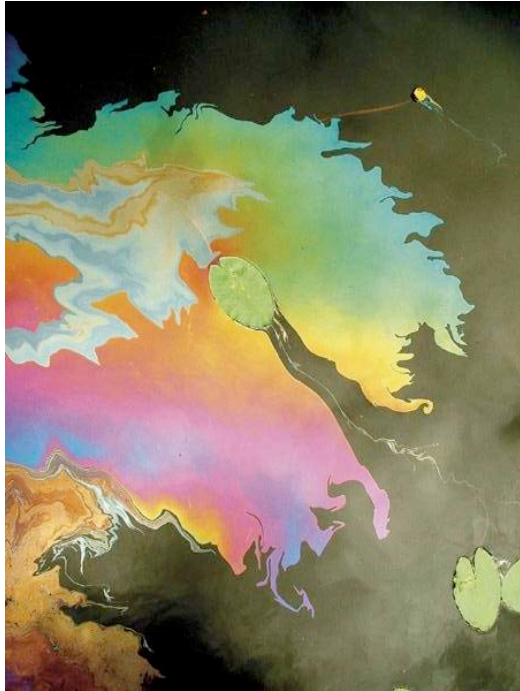
- Awareness and education
- Research
- Practical Projects showing best practice

We work with:

- Boaters
- Clubs and Training Centres
- Businesses
- Inland and Coastal



# What are the main issues?



1. Antifouling/Non-natives
2. Cleaning & Maintenance
3. Oil and fuel

Resource Efficiency

Sewage and Waste

Wildlife and Habitats

# 5 Years and counting...



- Information – Website, Leaflets, Case Studies, Boat Shows
- Recycling Scheme – Diverted 6 million litres of rubbish p/a
- Marine Toolkit – potential savings of £70k
- Practical Projects - Volvo Eco Challenge
- Partners – Sunsail, Henri Lloyd
- The Green Directory, Pump Out Directory
- Scientific Research - 600 papers
- Annual Conference – Team Origin
- Ambassadors – Dee Caffari, Mike Golding
- Media – All At Sea, AVE £50k, PBO Green Award 2009



# Current Hot Topics



## Studland Bay

- 2 year voluntary no anchor zone
- Research on sea grass



## Marine and Coastal Access Act

- Marine Management Organisation.
- 4 areas - SW, E Channel, N Sea, Irish Sea
- Potential small impact on recreational boaters, e.g. no anchoring and speed limits in certain areas

## Invasive non-native species

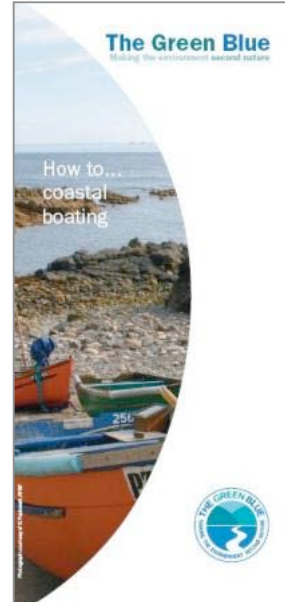
- Didemnum vexillum
- Largs, Holyhead



# What's next .....

- Primary and secondary research
- GRP disposal, end of hull life,
- Mainstreaming environmental research
- Market research – impact of TGB, sector trends
  
- Resource Efficiency – CRC
  
- Practical Projects
- Washdown systems, pump out facilities
- Calypso
  
- New website, On-line resources,
- Social networking media, digital natives!
  
- Staffing capacity, volunteers





**Thank you!**

[www.thegreenblue.org.uk](http://www.thegreenblue.org.uk)