

Mike Ward
Director
Marina Projects Ltd

Dredging Adviser to the BMF



Topics Covered

- Type of Dredging
- Consents Required
- Maintenance Dredging Protocol



Types of Dredging

Capital Dredging

- “excavation of material to deepen or create navigational channels and berths to provide additional harbour infrastructure or provide access for deeper draught vessels”
- “also applies to removal of areas of the seabed during construction works...”

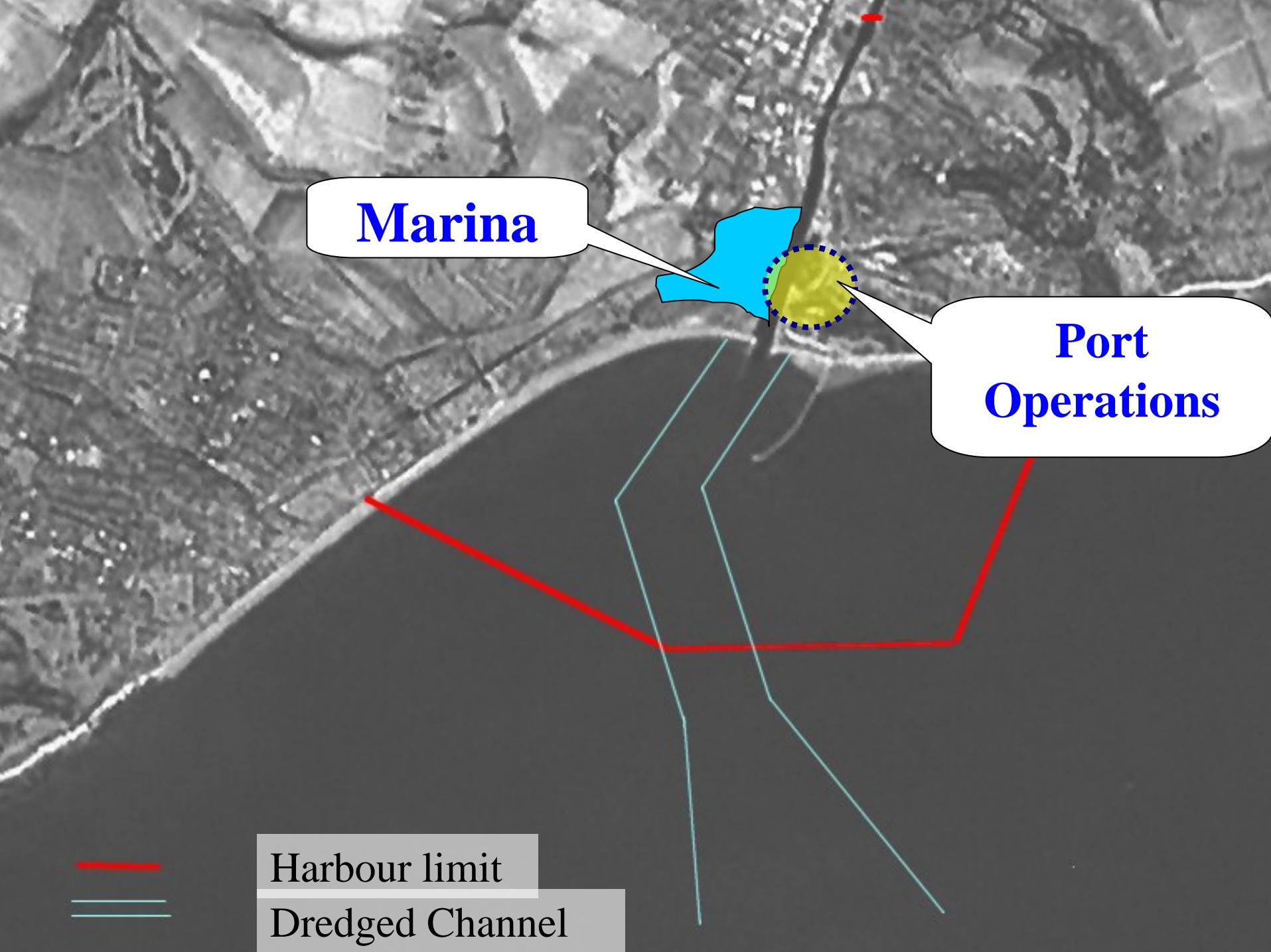


Types of Dredging

Maintenance Dredging

- “removal of accumulated sediments from harbour channels and berths to ensure a safe depth of water for navigational purposes”
- The “10-year” rule...
- Consider also -
 - beneficial disposal
 - environmental dredging
 - marine aggregate extraction





Marina

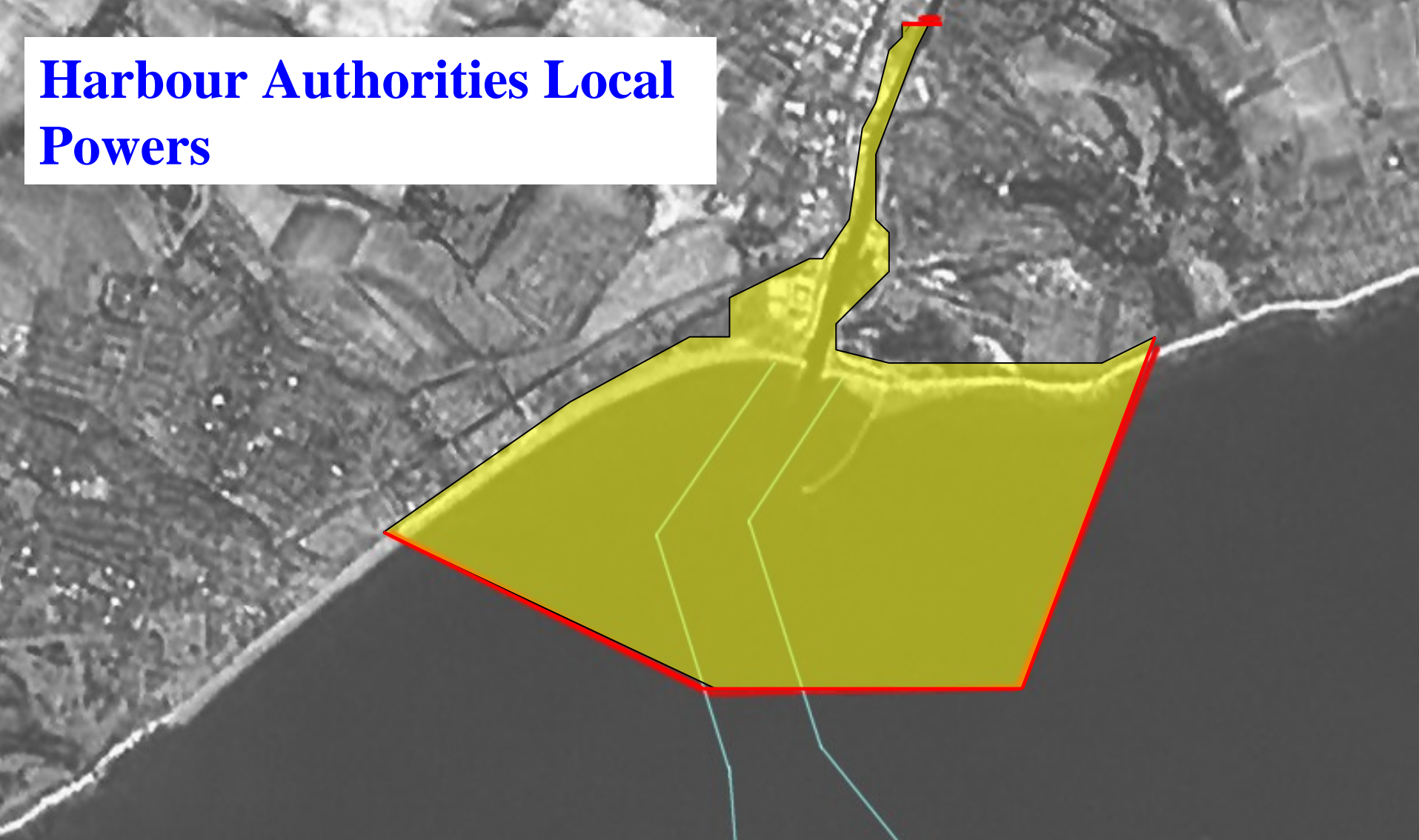
**Port
Operations**



Harbour limit

Dredged Channel

Harbour Authorities Local Powers



...controls the dredging (i.e. extraction) of material – normally only applies to maintenance

The Coast Protection Act 1949

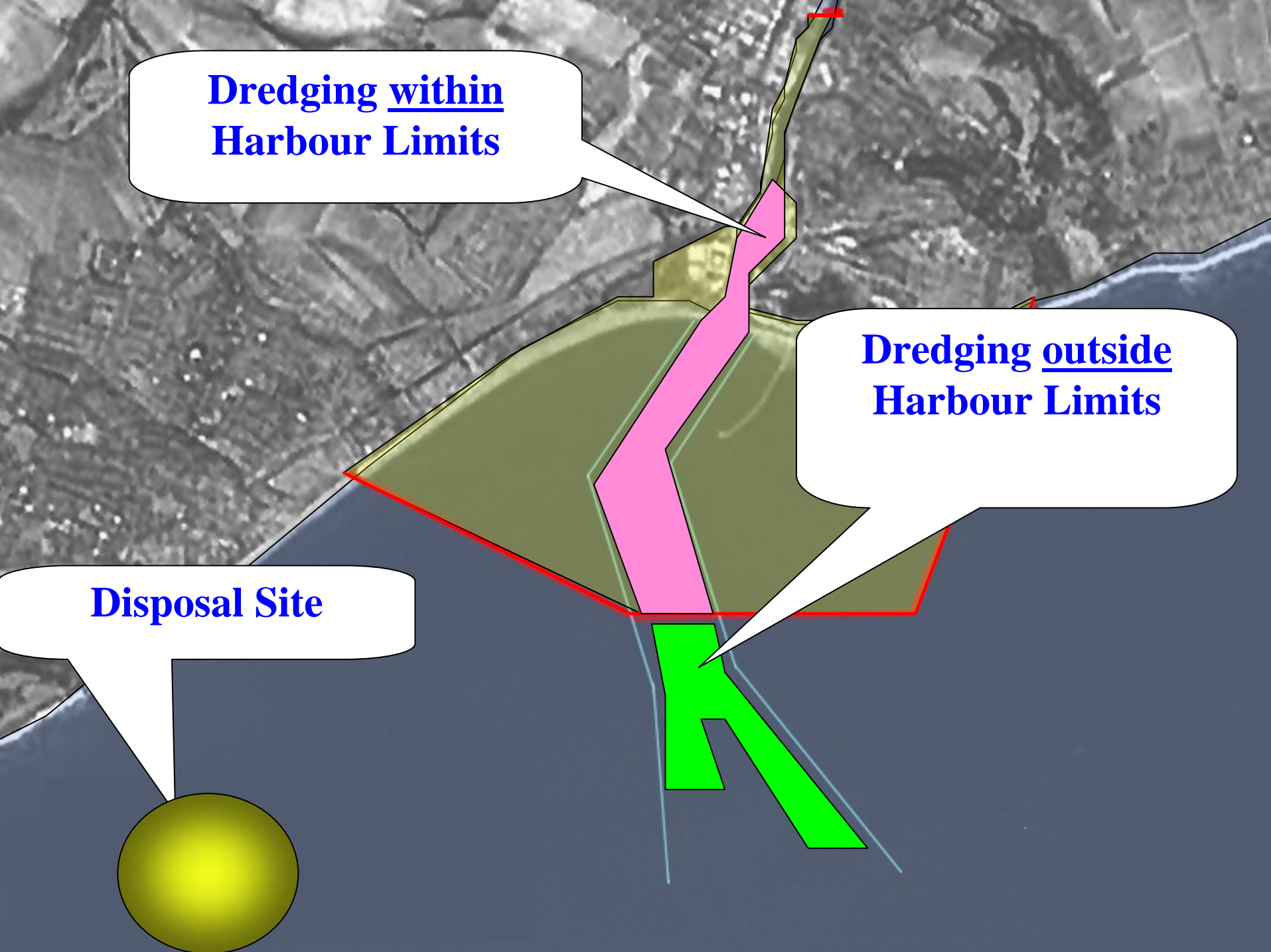


...also controls dredging (i.e. extraction) of material -
where there are no local powers &/or beyond harbour
limits

**Dredging within
Harbour Limits**

**Dredging outside
Harbour Limits**

Disposal Site



What consents apply – the main ones!

- Any **capital dredging** (or **maintenance dredging** outside of the Port's limits/powers) will require consent under the **Coast Protection Act 1949**
- **Maintenance dredging** may be subject to control under the Port's own **local powers.....** This will apply to the Port's **berths** and **inner channel** and may also apply to the **marinaHarbour Works Licence**
- **Disposal** at sea of dredged arisings (or placement of beneficial use material) will require a FEPA Disposal Licence.



Other Consents

- Land Owner Permission – usually required for a capital dredge and agreement should provide for future maintenance dredging.
- Planning Permission – may be required for Capital Dredge if it involves work above MLWS
- Flood Defence Consent – can be required for capital dredge but not usually relevant to maintenance activities.



Maintenance Dredging Protocol

Background

- Repeated detailed assessments of routine, regular maintenance dredging activity
- Industry and regulators opposing views on application of the Habitats Regulations



Maintenance Dredging Protocol

Industry view

- Ongoing process no need for repeat assessment –
- Excessive burden, unnecessary cost and lack of certainty

Regulators view

- Application of the Habitat Regulations classes MD as a Plan or Project

Solution

- Agreement between parties that there was a need to find a streamlined and proportionate solution



MDP – What & Where

“A voluntary conservation assessment Protocol for the review of maintenance dredging activities within Natura 2000 sites.”

- **Intended to be UK wide and applies to coastal dredging**



How – The Baseline Document

- **Consider all relevant conservation issues in an estuary – reasons for designation, conservation status, evidence of impacts**
- **Details of historic dredging activities – techniques, quantity, frequency, timing (must cover both extraction and disposal)**
- **Harbour Authority responsible for developing, updating and managing the Baseline Document – with stakeholder engagement!**
- **Clear view from NE on the extent to which current maintenance dredging regime has impacted on the designated site.**
- **Baseline document effectively provides an Environmental Statement**
- **Future applications judged against the detail of the Baseline Document**
- **Baseline document updated with details of future dredging and any revised conservation assessment**



The Benefits

- **More consistent, timely and better-informed decisions**
- **Improved certainty on applications**
- **Avoidance of repeated detailed environmental assessment**



Current Situation & Timescale

- **Pilot studies completed and Protocol updated**
- **Protocol has been “signed-off” by the working group including - EA, Defra and Natural England**
- **Formal adoption by relevant Defra Minister – Imminent**
- **Phased introduction – (3-5 year programme dealing with most sensitive estuaries as a priority)**
- **Steering Group to oversee the roll-out and extension of use**





Mike Ward
Director

Marina Projects Ltd

Tel: 023 9252 6688

mikeward@marinaprojects.com

www.marinaprojects.com

